

## KI JINGSUMAR BAD JINGIADA

(1) Ym pat don satia ki iad jingsumar na ki bynta ki syiar kiba ioh ia kane ka jingpang.

(2) Dei ban tep bha ne thang ia ki syiar kiba iap na kane ka jingpang.

(3) Hiar na kaba lyngkhuh bad ki syiar kibym pat tip ia ka koit ka khiah jong ki.

(4) Ha ka por ba don ka jingpang:

a. Pynduh ia ki syiar kiba ioh pang 21 sngi shwa ban wanrah ia ki syiar thymmai.

b. Pynkhuid bha ia ka jaka ne sem ha kaba buh ia ki syiar kiba ioh pang.

c. Pyntip klooi ia ki jingiap ki syiar jong phi sha ki hospital mrad/doctor.

d. Baroh ki syiar kiba dang theid thymmai dei ban buh la kajong. Ym duna ia ka 10 sngi shwa ban buh ia ki hapoh ka farm.

(5) ka jingai injek ia ki syiar ka long kaba donkam ban iada syiar bad rat diengkhong ia kane ka jingpang ranikhet.

## KA POR BAN AI INJECK NI IADA PYRSHAH IA KANE KA JINGPANG.

Disease	Age	Name of the vaccine	Dose & route of administration
Ranikhet /new castle disease	7 <sup>th</sup> sngi	F-1/Lasota strain	Intra ocular/intra nasal 1-2 drops
	28 <sup>th</sup> sngi	F-1/Lasota strain	Intra ocular/intra nasal 1-2 drops
	8 <sup>th</sup> Taiew	R <sub>2</sub> B Mukhet swar strain	s/c or i/m (0.5 ml)
	12 <sup>th</sup> - 14 <sup>th</sup> taiew	R <sub>2</sub> B Mukhet swar strain	s/c or i/m (0.5 ml)

**La pynmihda da:**

**Dr. Jeremy Wahlang**  
SMS (Animal Science), KVK  
West Khasi Hills, Nongshillong,  
Meghalaya.



## NEW CASTLE /RANIKHET DISEASE.

*Jinpang ba shyrkhei ha ki syiar*



**Krishi Vigyan Kendra**  
West Khasi Hills, Meghalaya

**New Castle/Jingpang Ranikhet** ka long ka jinpang kaba kynrei ha ki sim ba la wanrah da u khniang jinpang Paramyxovirus. Bun na ki jiat sim kynthup ia ki sim khlaw, ki sim die bad ki ba ngi ri ha ing ki lah ban ioh ia kane ka jingpang. Kane ki jingpang ka saphriang kylleng ka pyrtheie bad ka wanrah ia ka jingiap jong ki sim kiba ioh ia kane ka jingpang, ha u briew ka wanrah ia ki jingpang jong ki khmat kaba lah ban iabit.

Jingpang Ranikhet ka long kaba shyrkhei ba bun na ki syiar ki iap bad kham duna ba kin koit na kane ka jingpang.. Ka jingiap jong ki sim ka lah ban long haduh 100 percent bad ka lah ruh ban bit ha kiwei pat ki sim/syiar kiba khlem pat ai tika.

### **JINGSAPHRIANG**

(1) Ki sim khlaw ki long kawei na ki ban wanrah ia kane ka jingpang ha ki sim kiba ngi ri.

(2) Ka jingiajan bad ki jaboh ba la pynmih da ki sim kiba ioh pang bad ka jingiatyngkhuh jong ka shyntur, khmut bad khmat jong ki sim kiba pang.

(3) Ki kali kiba jakhlia, ki tiar ki tar, ki jain. Ka um bad ki jingbam Shiar.

### **KI DAK KI JONG KI SIM KIBA IOH IA KANE KA JINGPANG**

(1) Ki sim kiba ioh pang ki pyni ia ka jingmih ki eitmut bad ka jingmih jyrtho na ka shyntur, ka jingbym ioh ban ring bad jingsynriah.

(2) Ka jingsngewsih kaba pyni ia ka jinglong jaituh.

(3) Ka jingleit bar kaba long um jyrngam (pynhiar).

(4) Ka don ka jingkhyrwait jong ka khlieh ka ryndang kaba lah ba ki iap shiliang.

(5) haba ki syiar kiba dong kha, ka pynduna ia ka jingkha pylleng bad ka lah ruh ban pynsangeh syndon ia ka jingkha pylleng jong ki.

(6) Ka bynta jong ka khmat bad ryndang ki at.

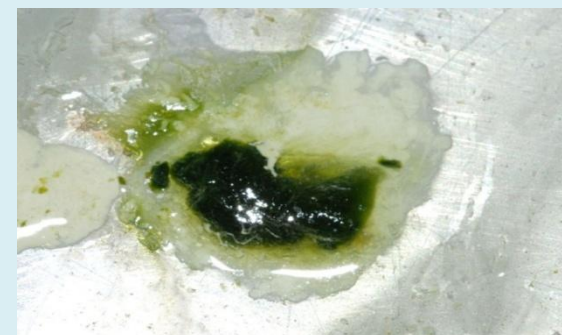
(7) Ki syiar kiba ioh pang kila ban iap kyndit.



Ka jingring mynsiem da ka shyntur



Ka jingkhyrwait jong ka ryndang.



Ka pynhiar ba long jyrngam bad bas ma iwkhong



Ka jingat ki bynta jong ka kmat bad ryndang